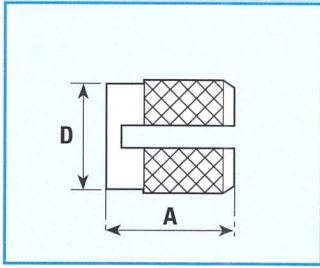


TECHNICAL DATA

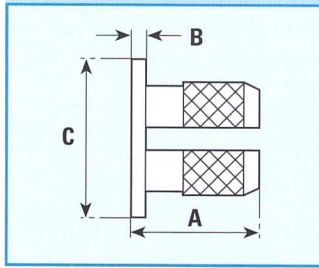
BANC-LOK

INSERTS



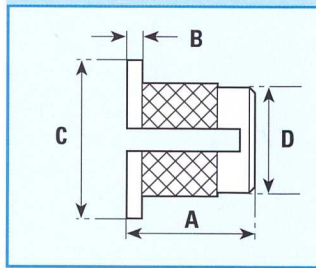
Product Code N41

HEADED INSERTS



Product Code N42

REVERSE INSERTS



Product Code N42R

STANDARD MATERIAL - Brass (B) - Other materials possible on quotation

DIMENSIONS

| INTERNAL THREAD SIZES | | A | A* | B | C | D | Rec. Hole Size | Min. Wall Thickness |
|-----------------------|------------|------|-----|------|------|-----|----------------------|---------------------|
| Unified | ISO Metric | mm | mm | mm | mm | mm | -0.00 +0.10 mm | mm |
| 2 | 2 | 3.9 | - | 0.43 | 4.8 | 3.2 | 3.2 | 2.4 |
| - | 2.5 | 4.7 | - | 0.51 | 5.5 | 4.0 | 4.0 | 3.2 |
| 4 | 3 | 4.7 | 3.5 | 0.51 | 5.5 | 4.0 | 4.0 | 3.2 |
| 6 | 3.5 | 6.3 | 3.5 | 0.66 | 6.4 | 4.7 | 4.8 | 3.6 |
| 8 | 4 | 7.9 | 5.0 | 0.82 | 7.1 | 5.5 | 5.6 | 4.0 |
| 10 | 5 | 9.4 | 6.0 | 0.99 | 7.9 | 6.3 | 6.4 | 4.8 |
| 1/4 | 6 | 12.6 | 9.5 | 1.25 | 9.5 | 7.9 | 8.0 | 6.0 |
| 5/16 | 8 | 12.6 | 9.5 | 1.25 | 11.1 | 9.5 | 9.6 | 7.0 |

A* - Preferred shorter lengths
Other lengths possible on quotation.

HOW TO SPECIFY

INSERTS

| | |
|------------------------|--------------|
| PRODUCT CODE | N41-B-M3 |
| MATERIAL | N41-B-M3 |
| THREAD SIZE | N41-B-M3 |
| LENGTH (if applicable) | N41-B-M3-3.5 |

HEADED INSERTS

| | |
|------------------------|--------------|
| PRODUCT CODE | N42-B-M3 |
| MATERIAL | N42-B-M3 |
| THREAD SIZE | N42-B-M3 |
| LENGTH (if applicable) | N42-B-M3-3.5 |

REVERSE INSERTS

| | |
|------------------------|---------------|
| PRODUCT CODE | N42R-B-M3 |
| MATERIAL | N42R-B-M3 |
| THREAD SIZE | N42R-B-M3 |
| LENGTH (if applicable) | N42R-B-M3-3.5 |

NOTE:

It is not necessary to specify a length where a standard insert is required.
If the application requires a shorter than standard insert they may be selected from the table above (A*).

BANC-LOK INSERTS