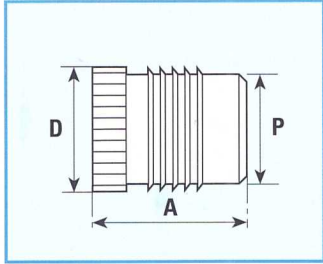


TECHNICAL DATA

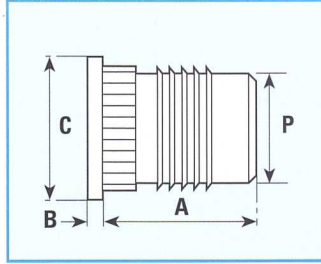
FIN-LOK

INSERTS



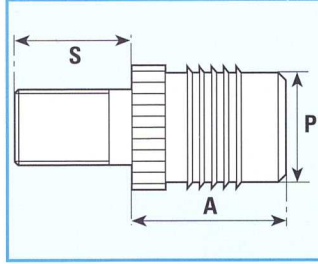
Product Code FL

HEADED INSERTS



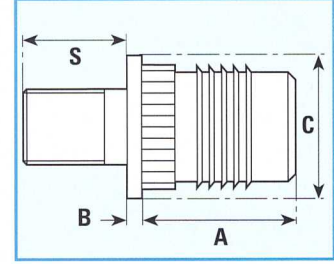
Product Code FLH

STUDS



Product Code FLTS

HEADED STUDS



Product Code FLHS

STANDARD MATERIAL - Brass (B) - Other materials possible on quotation

DIMENSIONS

INTERNAL THREAD SIZES		A	B	C	D	P	No. of Fins	Rec. Hole Size -0.00 +0.10 mm	Min. Wall Thickness mm
Unified	ISO Metric	mm	mm	mm	mm	mm			
2	2	4.0	0.45	4.8	3.7	3.1	2	3.2	1.6
-	2.5	4.8	0.58	5.5	4.5	3.9	3	4.0	2.0
4	3	4.8	0.58	5.5	4.5	3.9	3	4.0	2.0
6	3.5	6.4	0.74	6.4	5.3	4.7	4	4.8	2.4
8	4	7.9	0.89	7.1	6.1	5.5	5	5.6	2.8
10	5	9.5	1.07	7.9	7.0	6.3	5	6.4	3.2
1/4	6	12.7	1.32	9.5	8.6	7.9	7	8.0	4.0
5/16	8	12.7	1.32	11.0	10.2	9.5	7	9.6	4.8

A = Standard lengths
Other lengths possible on quotation.

Standard Stud Lengths (Dimensions 'S')

MILLIMETRES	5	6	8	10	12	14	16	18	20	25
INCHES	3/16	1/4	5/16	3/8	7/16	1/2	5/8	3/4	7/8	1

HOW TO SPECIFY

INSERTS

PRODUCT CODE	FL-B-M3
MATERIAL	FL-B-M3
THREAD SIZE	FL-B-M3

HEADED INSERTS

PRODUCT CODE	FLH-B-M3
MATERIAL	FLH-B-M3
THREAD SIZE	FLH-B-M3

STUDS

PRODUCT CODE	FLTS-B-M4-10mm
MATERIAL	FLTS-B-M4-10mm
THREAD SIZE	FLTS-B-M4-10mm
LENGTH (if applicable)	FLTS-B-M4-10mm

HEADED STUDS

PRODUCT CODE	FLHS-B-M5-12mm
MATERIAL	FLHS-B-M5-12mm
THREAD SIZE	FLHS-B-M5-12mm
LENGTH (if applicable)	FLHS-B-M5-12mm

FIN-LOK INSERTS & STUDS