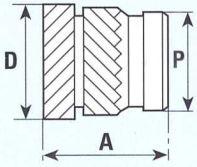


# TECHNICAL DATA

# SONIC-LOK

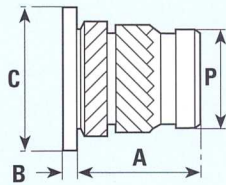
SONIC-LOK INSERTS & STUDS

## INSERTS



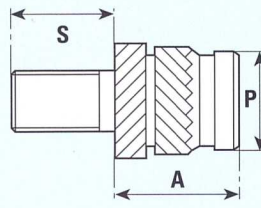
Product Code SL

## HEADED INSERTS



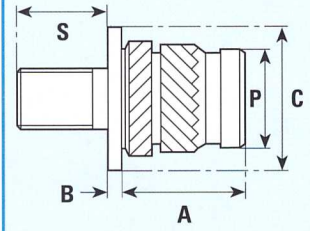
Product Code SHK

## STUDS



Product Code SLTS

## HEADED STUDS



Product Code SLHS

STANDARD MATERIALS - Brass (B) - Other materials possible on quotation

## DIMENSIONS

INTERNAL THREAD SIZES		A	A*	B	C	D	P	Rec. Hole Size -0.00 +0.10	Min. Wall Thickness
Unified	ISO Metric	mm	mm	mm	mm	mm	mm	mm	mm
2	2	4.0	3.0	0.53	4.8	3.6	3.1	3.2	1.3
-	2.5	5.7	4.0	0.61	5.5	4.6	3.9	4.0	1.6
4	3	5.7	4/4.8	0.61	5.5	4.6	3.9	4.0	1.6
6	3.5	7.1	5.0	0.76	6.4	5.4	4.7	4.8	1.8
8	4	8.2	4/4.8/5.8	0.91	7.1	6.3	5.5	5.6	2.1
10	5	9.5	5.8	1.09	7.9	7.1	6.3	6.4	2.6
1/4	6	12.7	6.8/9.5	1.35	9.5	8.7	7.9	8.0	3.3
5/16	8	12.7	-	1.35	11.1	10.2	9.5	9.6	4.5
3/8	10	12.7	-	1.60	14.0	12.6	11.8	11.9	6.0
1/2	12	15.9	-	2.00	19.0	16.7	15.8	16.0	8.0

A\* - Preferred shorter lengths.  
Other lengths possible on quotation.

## Standard Stud Lengths (Dimensions 'S')

MILLIMETRES	5	6	8	10	12	14	16	18	20	25
INCHES	3/16	1/4	5/16	3/8	7/16	1/2	5/8	3/4	7/8	1

## HOW TO SPECIFY

### INSERTS

PRODUCT CODE	SL-B-M3
MATERIAL	SL-B-M3
THREAD SIZE	SL-B-M3
LENGTH (if applicable)	SL-B-M3-4.8

### HEADED INSERTS

PRODUCT CODE	SHK-B-M3
MATERIAL	SHK-B-M3
THREAD SIZE	SHK-B-M3
LENGTH (if applicable)	SHK-B-M3-4.8

### STUDS

PRODUCT CODE	SLTS-B-M4-10mm
MATERIAL	SLTS-B-M4-10mm
THREAD SIZE	SLTS-B-M4-10mm
LENGTH (if applicable)	SLTS-B-M4-10mm

### HEADED STUDS

PRODUCT CODE	SLHS-B-M5-12mm
MATERIAL	SLHS-B-M5-12mm
THREAD SIZE	SLHS-B-M5-12mm
LENGTH (if applicable)	SLHS-B-M5-12mm

### NOTE:

It is not necessary to specify a length where a standard insert is required.  
If the application requires a shorter than standard insert they may be selected from the table above (A\*).